



stalgast
ekspert gastronomiczny

Operating Instructions

v1.0 -11.2014

Meat Grinder

MODEL: 721121



Thank you for your purchase of a Stalgast product. Before use please familiarize yourself in detail with the following instruction manual.

Copying of the following manual without the consent of the manufacturer is prohibited.

Images and drawings are of illustrative character and may differ from the purchased product.

ATTENTION: This manual should be kept in a safe place accessible for personnel. The manufacturer reserves the right to change the technical characteristics of the product without any notice.

I. SAFETY INSTRUCTIONS:

- Incorrect maintenance and/or use may cause serious harm to people and damage the device.
- The device can only be used for the purpose for which it has been designed.
- The manufacturer does not take any responsibility for damages caused by improper maintenance or use of the device.
- When in use, secure the device and its electrical plug from any contact with water or other fluids. In case the device is accidentally dropped into water the electrical plug should be immediately removed from the socket and the device should be inspected by a trained professional.

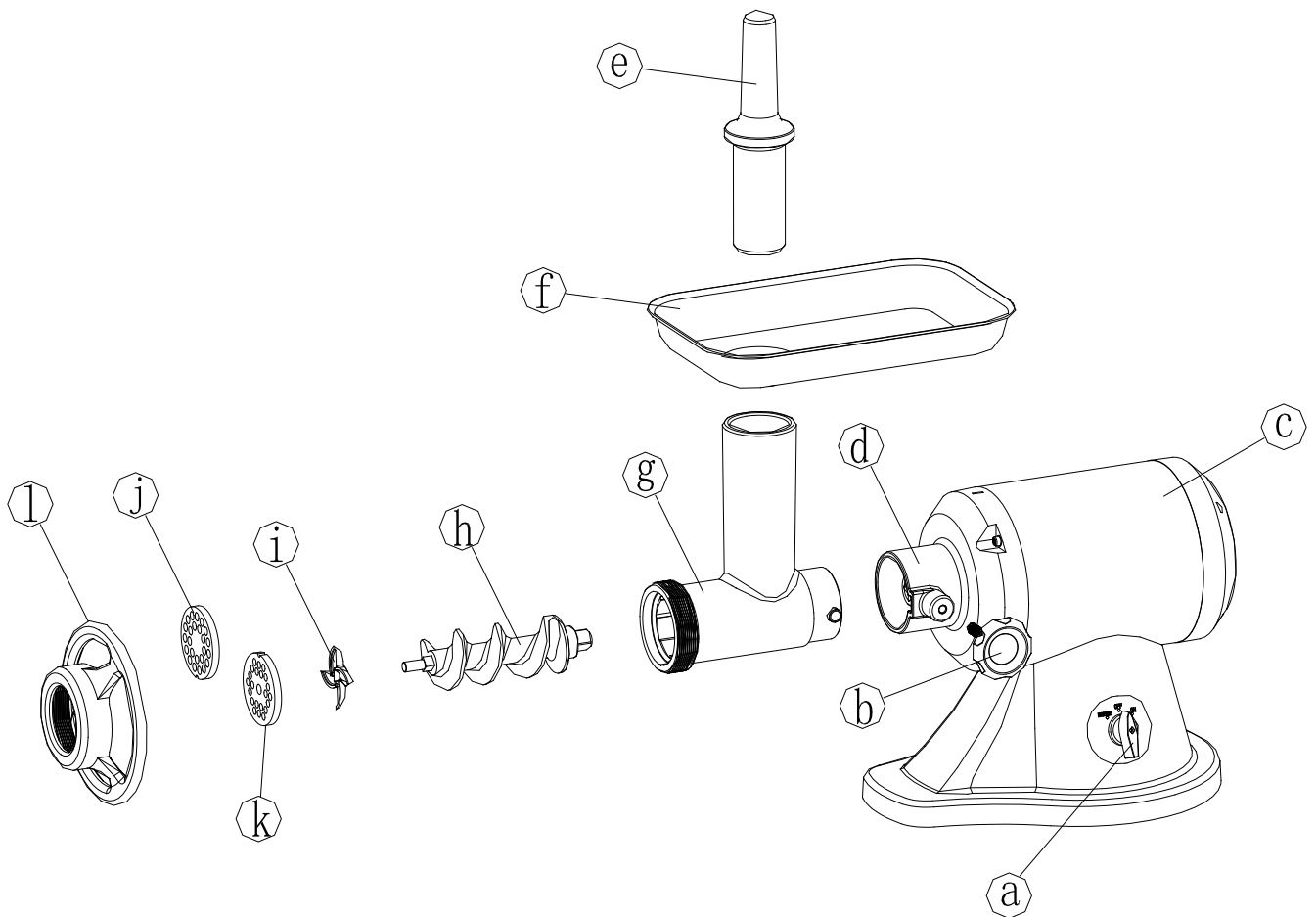
ATTENTION: Failure to obey these instructions may cause life threatening danger.

- Never open the casing of the device on your own.
- Do not stick any objects into the casing of the device.
- Do not touch the electrical cord with wet hands.
- Check the condition of the electrical plug and cord regularly. In case any damage to the plug or cord is discovered order repair by a specialized service provider.
- In case the device is dropped or damaged otherwise, before further use always order a check-up and repair by a specialized service provider.
- Do not make any attempts to repair the device on your own – this may cause life threatening danger.
- Protect the electrical cord from contact with sharp or hot objects and keep it away from open fire. When you disconnect the device from the electrical socket always hold the plug and never pull the electrical cord.
- Secure the electrical cord (or the extension cord), so that it is not unplugged by mistake and so that no one can stumble over it.
- Monitor functioning of the device while in use.
- Use of the device by people underage, physically or mentally incapable, with motion disorders as well as people without proper experience and knowledge regarding the use of this device should not be allowed. All of the above should only use the device under supervision of a person responsible for their health and safety.
- When not used or during maintenance you should always unplug the device from the source of electricity by removing the electrical plug from the socket.
- **ATTENTION:** when the electrical plug is plugged into the socket the device is constantly live.
- Switch the device off before removing the plug from the socket.
- Never pull the device by the electrical cord.

2. DANE TECHNICZNE

Productivity	220kg/h
Speed of blade	200r/min
Motor	Input Power 550W
Power supply	Local Supply 230 Local Supply/50Hz
Dimensions/CTN	57.8X33.8 X38.8 cm
Gross Weight	33kg

3. PARTS IDENTIFICATION



- a. Switch
- b. Locking knob
- c. Motor housing
- d. Opening
- e. Food pusher
- f. Hopper plate
- g. Head
- h. Feed screw
- i. Cutting blade
- j. Cutting plate (coarse)
- k. Cutting plate (medium)
- l. Screw Cap

4. CAUTIONS

Unplug when assembling or disassembling the unit.

Close supervision is necessary when any appliance is used near children.

When carrying the unit, be sure to hold Motor Housing with both hands, not to hold only Hopper Plate. Be careful to carry the unit because it is very heavy.

Never feed food with hand. Use Food Pusher.

Do not grind hard foods such as bones and nuts.

Do not grind ginger and other materials with hard fiber.

To avoid jamming, do not force to operate the unit with excessive pressure.

If the unit jams due to hard materials lodged on to Feed Screw or Cutting Blade, switch off immediately and clean the unit. (See "Jamming")

Never try to undo the parts or to repair the unit by yourself. If the supply cord is damaged, it must be replaced by a special cord from your dealer or its service agent.

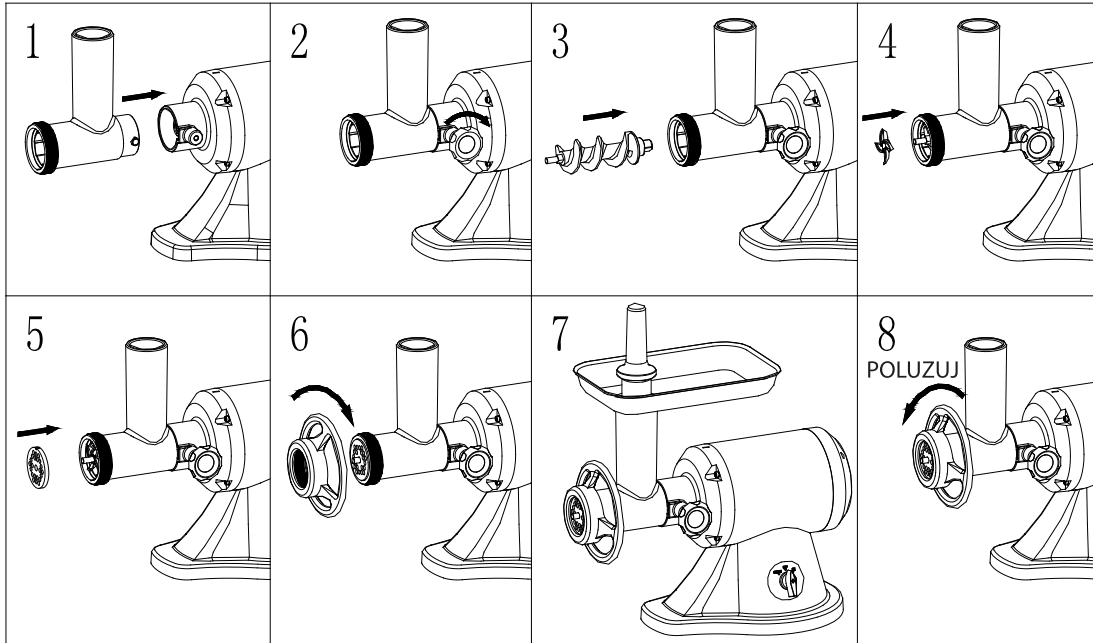
5. BEFORE USE

Make sure that the voltage and frequency indicated on the bottom plate are the same as your local supply, and that the external earthed wire is reliable connected.

Wash all the parts (except those that do not touch foods, a ,b ,c and d) in warm soapy water.

Before plugging in, ensure Switch is off.

6. TO MINCE MEAT



1 Place Head tightly onto Opening of Motor Housing

2 Holding Head with one hand, tighten Locking Knob clockwise.

3 Place Feed Screw into Head, long end first, by turning Feed Screw slightly until it is set into Motor Housing and cover the transmission shaft.

4 Place Cutting Blade onto Feed Screw shaft with the blade facing the front as illustrated.

- If it is not fitted properly, meat will not be ground.

5 Place desired Cutting Plate next to Cutting blade, gap align the pin of head.

6 Screw Cap into place until tight.

- Do not over tighten.

Place Hopper Plate on Head and fix into position.

Locate the unit on a firm place.

- The air passage at the bottom and the side of Motor Housing should be kept free and not blocked.

(Mincing meat)

Cut all foods into pieces so that they fit easily into Hopper opening.

Plug in, then switch on.

7 Feed foods into Hopper Plate.

- Use Food pusher.

After use, switch off and unplug.

NOTE:

If the minced meat is not discharged smoothly or in the form of paste, the causes and remedies could be:

1 Screw Cap is tightened too much thus, the Cutting Blade does not contact properly with the Cutting Plate. Readjust it.

2 The Cutting Plate is blocked. Clean it.

3 Cutting Blade edges is dull. Grind or replace it.

6.1. Jamming

When the motor is locked, or when the motor continues to function but no meat comes out of Cutting Plate, due to jamming of bone or other materials that stop the motor, switch off.

- Do not switch on.

Turn Switch to REVERSE to clear jamming of bone or other materials.

Clean the unit. (See “To clean “below”)

7. TO CLEAN

Make sure that the motor has stopped completely. Disconnect the plug from the power outlet.

Screw Cap has 3 flat sides, convenient for unscrewing. If Screw Cap is too tight, please knock at the flat sides with a soft-handle, then Screw Cap will be unscrewed easily.

Unscrew the Locking Knob, and take out Head (with Cutting Plate, Cutting Blade and Feed Screw), then put Head mouth downward in order to take out Cutting Plate, Cutting Blade and Feed Screw.

(Cleaning)

Remove meat, etc.

Wash each part in warm soapy water.

- A bleaching solution containing chlorine will discolor aluminum surfaces.
- Do not immerse Motor Housing in water, but only wipe it with a damp cloth.
- Thinners and benzines will crack or change the color of the unit.

A little salad oil on ,h~,k after washing and drying will keep them lubricated.

8. END-OF-SERVICE LIFE RECYCLING

After the device reached its end-of-service life or when buying new equipment at Stalgast you can return the old device.

Send it to us and a specialized company will recycle it in accordance with the ESOL for Electrical and Electronic Equipment Act (Legal Journal 2005 no. 180 point 1495).

9. WARRANTY

The seller provides warranty for the product.

Any damage resulting from settlement of calcium on the device is not covered by the warranty.

Such elements as light bulbs, rubber elements, heating elements damaged by limescale, screws and elements which naturally wear down such as heaters, gaskets, and any other elements damaged mechanically are not covered by the warranty.